



**ALASKA DIVISION OF HOMELAND SECURITY &  
EMERGENCY MANAGEMENT**



**SITUATION REPORT 23-083 • MARCH 24, 2023**

Toll-Free 1.800.478.2337

Anchorage Area 907.428.7000

SEOC 907.428.7100

|   |   |  |
|---|---|--|
| <p><b><u>SEOC Preparedness Level</u></b><br/>Level 1 – Routine Operations</p>                     | <p><a href="http://ready.alaska.gov">http://ready.alaska.gov</a></p>                                | <p><b><u>National Terrorism Advisory System:</u></b><br/><a href="#">Read the NTAS Bulletin here</a></p> |
| <p><b><u>Maritime Security (MARSEC)</u></b><br/>Level:1-Minimum Appropriate Security Measures</p> | <p><b>WHO Novel Coronavirus Pandemic (COVID-19):</b><br/><a href="#">2019 Novel Coronavirus</a></p> | <p><b><u>Alaska Military Installation Force Protection Level:</u></b> FPCON Bravo</p>                    |

(Significant changes from previous situation reports are in red.)

**Significant Issues:**

None

**State of Alaska Department of Health (DOH)**

The DOH is leading the State of Alaska COVID-19 Recovery, supported by the SEOC and other state departments as required.

For current COVID-19 information, see:

<https://covid19.alaska.gov/>

<https://www.cdc.gov/coronavirus/2019-ncov/index.html>

**NTAS Bulletin**

The U.S. Department of Homeland Security has issued an updated National Terrorism Advisory Bulletin. The updated bulletin can be viewed at the below link

To read current or expired advisories, click the link below:

<https://www.dhs.gov/national-terrorism-advisory-system>

**Travel Alerts and Conditions**

For current driving conditions dial 511 or link to <https://511.alaska.gov/>

**Barry Arm Landslide / Tsunami Risk**

For the latest information on the Barry Arm Landslide and Tsunami risk, click here:

[DGGs Barry Arm Landslide and Tsunami Hazard](#)

**Recent Earthquakes**

USGS Earthquake Information: <http://earthquake.usgs.gov/>

National Tsunami Warning Center: <http://tsunami.gov/>

## Alaska Volcanoes

**Great Sitkin** Alert Level: **Watch** and Aviation Color Code: **Orange**  
**Aniakchak** Alert Level: **Advisory** and Aviation Color Code: **Yellow**  
**Semisopchnoi** Alert Level: **Watch** and Aviation Color Code: **Orange**  
**Takawangah** Alert Level: **Advisory** and Aviation Color Code: **Yellow**  
**Tanaga** Alert Level: **Advisory** and Aviation Color Code: **Yellow**  
**Trident** Alert Level: **Advisory** and Aviation Color Code: **Yellow**  
For Alaska Volcano updates, go to: <https://www.avo.alaska.edu/>

## Air Quality Index (AQI) Advisories

For the most up to date Air Quality Index Advisories:

<http://dec.alaska.gov/Applications/Air/airtoolsweb/Home/Index>

## Spills of Oil and Hazardous Substances

The ADEC Spill Prevention and Response page is located at:

<http://dec.alaska.gov/spar/ppr/spill-information/response/>

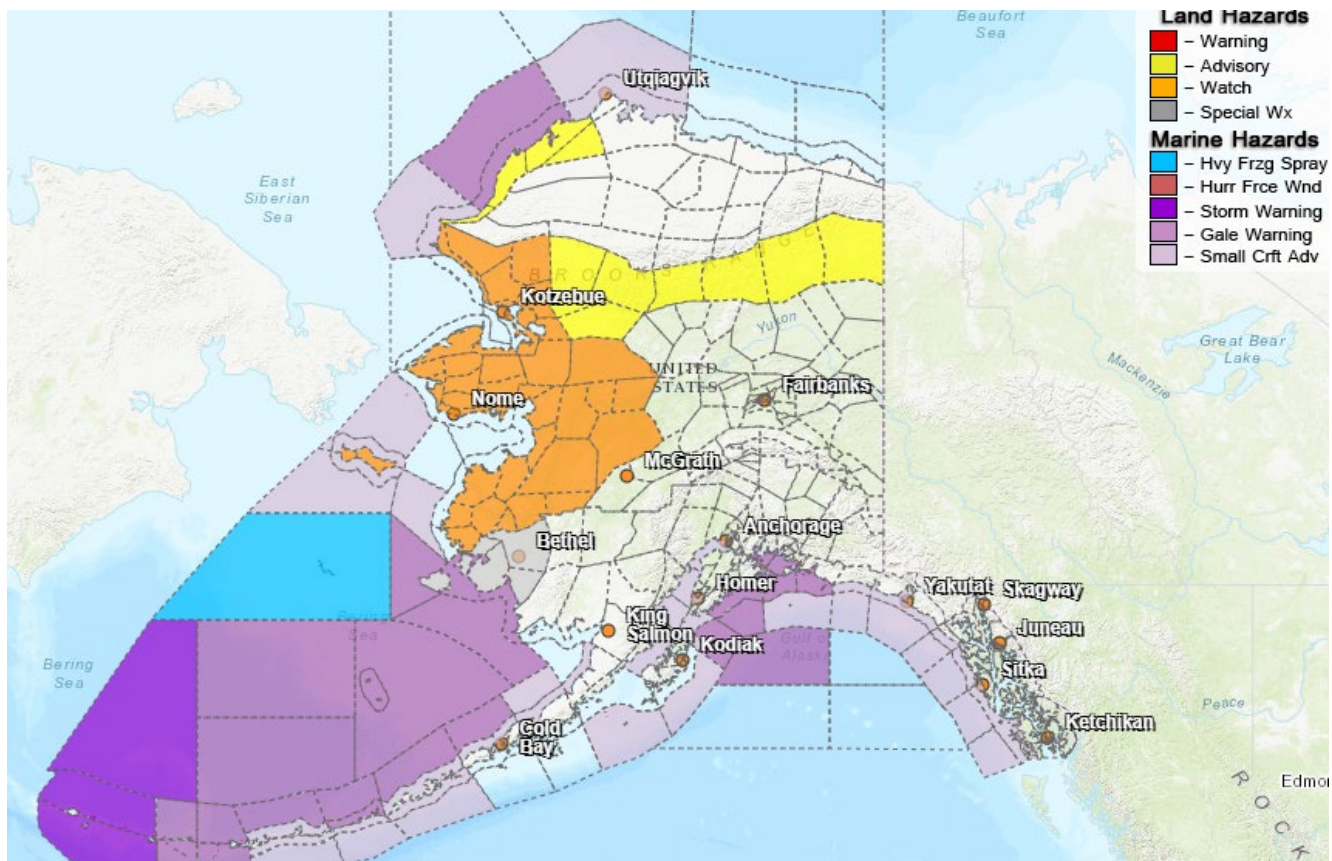
## Alaska Cyber Security Information

State Employees may sign up for cyber security notifications and alerts at

<https://oit.alaska.gov/security>

CISA-Cybersecurity Services and Tools: [www.cisa.gov/free-cybersecurity-services-and-tools](http://www.cisa.gov/free-cybersecurity-services-and-tools)

## Significant Weather:



Winter storm watches are in effect for the following areas:



- Southern Seward Peninsula Coast; Northern and Interior Seward Peninsula beginning Saturday morning through late Sunday night for 12 to 18 inches of snow and winds gusting to 55mph.
- St. Lawrence Island, Bering Strait Coast, Baldwin Peninsula, Selawik Valley, Chukchi Sea Coast, Eastern Norton Sound and Nulato Hills from Saturday morning through Monday afternoon for 5 to 10 inches of snow and winds gusting to 50mph.
- Lower Kobuk and Noatak Valleys; Lower Koyukuk and Middle Yukon Valleys; Lower Yukon Valley; Yukon Delta beginning Saturday morning through Monday afternoon for 6 to 12 inches of snow accumulation and winds gusting to 60mph.

Winter weather advisories are in effect for the following areas:

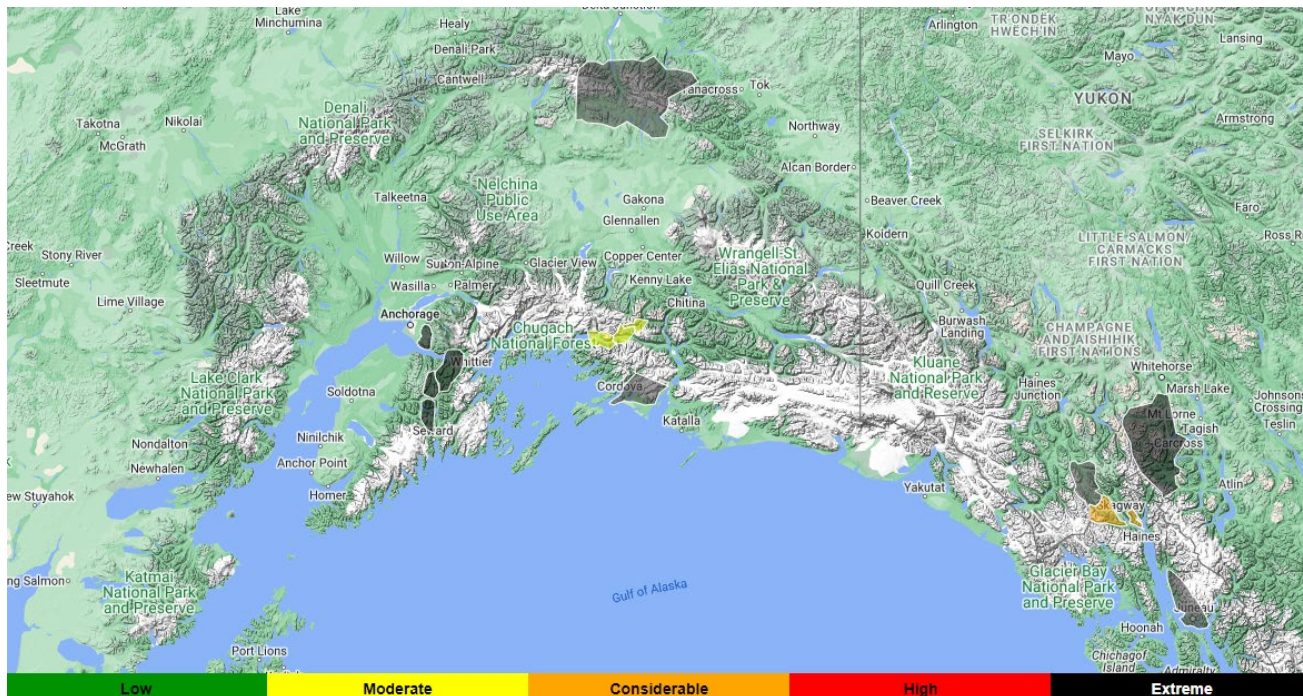
- Upper Kobuk and Noatak Valleys until 4pm this afternoon for snow accumulation of 3 to 8 inches and areas of blowing snow.
- **Western Arctic Coast; until from 4pm this afternoon to 6am Saturday for snow and blowing snow with snow accumulation of one inch and winds gusting as high as 45mph.**
- **Southeastern Brooks Range until 6pm this evening for snow and blowing snow with snow accumulations of two inches and winds gusting to 40mph.**

A Special Weather Statement has been issued for a very strong storm that is developing in the Western Bering Sea today will bring strong southerly winds, snow and blowing snow with blizzard conditions to St. Lawrence Island and the Bering Strait by early Saturday, and to the remainder of the West Coast on Saturday that will continue into Sunday and taper off on Sunday night or Monday. Snow and winds will spread into the Western Interior on Saturday night. Blizzard conditions will occur over most of the West Coast Saturday and Saturday night. Winds could gust to 75 mph along the Western Capes, and to 50-60mph, with gusts to 40 mph in the Western Interior into Sunday along the West Coast south of Point Hope.

A Special Weather Statement has been issued for the Kuskokwim Delta for a strong front that will reach the Kuskokwim Delta Saturday afternoon and remain nearly stationary over the region through Monday Morning with gusts of up to 50mph and up to an inch of rain.

For more information and the most current weather, go to: <http://www.weather.gov/arh>.

### **Avalanche Forecast:**



- Haines – Considerable advisory level above 2,500ft and moderate advisory level below 2,500ft.
- Valdez – Moderate avalanche advisory level at all elevations.

- Cordova area: Considerable advisory level above 2,000 ft, Moderate advisory level from 1,00ft to 2,000ft and low advisory level below 1,000 ft.
- Turnagain Pass – **Considerable avalanche advisory above 1,000 ft., Moderate avalanche advisory level below 1,000 ft.**
- Hatcher Pass – Moderate advisory level above 2,500 ft. for Wind Slab on Southwest to Northwest aspects on slopes 35° and steeper. Low advisory level below 2,500 ft.

Check the Avalanche Forecast Center closest to your area for the most up to date information on avalanche potential. <https://alaskasnow.org> or <https://www.weather.gov/afc/avalancheweather>

**The Next Situation Report:** will be **28 March 2023**. A significant change in the situation or the threat level will prompt an interim report. This report is posted on the internet at <https://ready.alaska.gov/sitrep>.

To register for email distribution, go to <http://list.state.ak.us/mailman/listinfo/dhsem.situation.report>. Direct questions regarding this report to the SEOC at 907-428-7100 or [seoc@alaska.gov](mailto:seoc@alaska.gov)